

QGIS Application - Bug report #9846

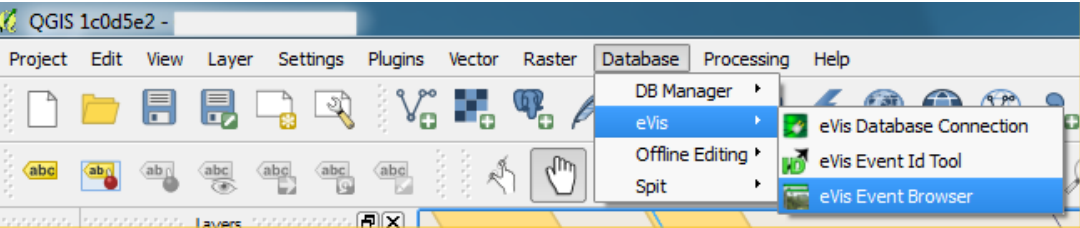
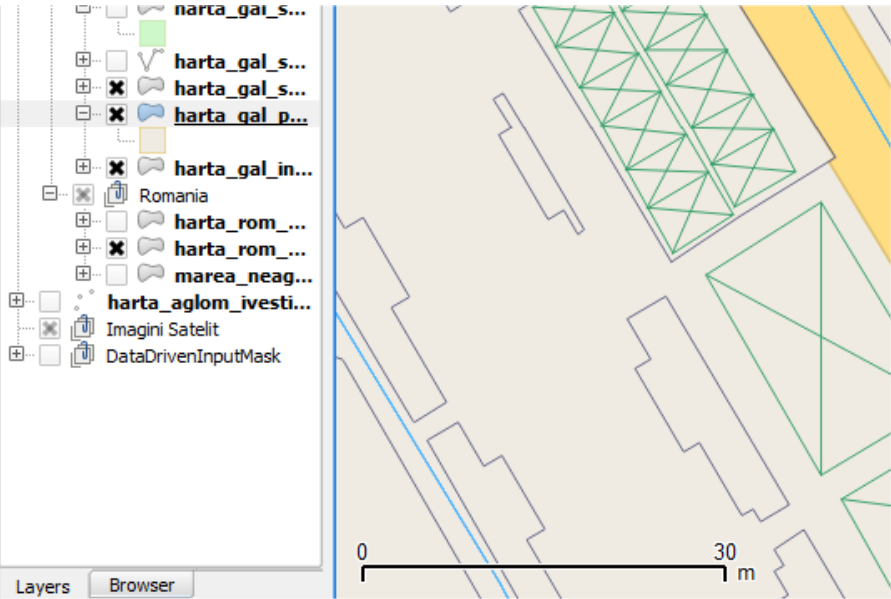
QGIS map canvas becomes blank after accessing eVis Event Browser

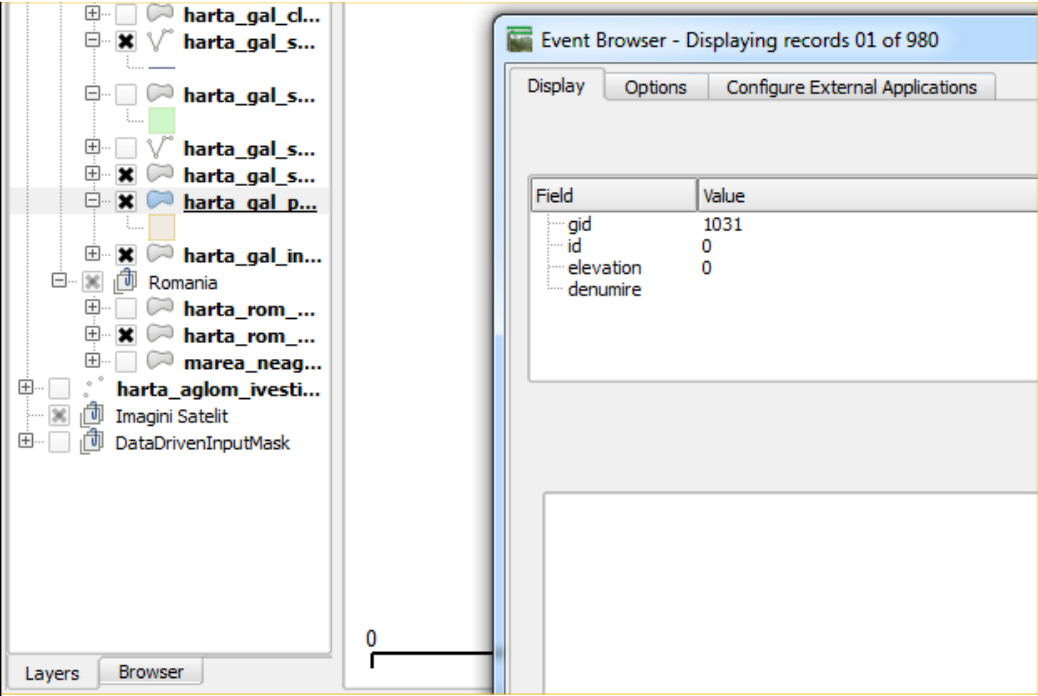
2014-03-24 02:41 AM - Sorin Calinica

Status:	Closed	
Priority:	Normal	
Assignee:		
Category:	C++ plugins/Evis	
Affected QGIS version:	2.2.0	Regression?: No
Operating System:	Windows	Easy fix?: No
Pull Request or Patch supplied:	no	Resolution: duplicate
Crashes QGIS or corrupts data:	no	Copied to github as #: 18375

Description

My QGIS map canvas becomes blank after I choose *eVis Event Browser* from the *Database > eVis* menu:





This happens for the polygon and linestring layers.

When I select a point layer and then I'm accessing the eVis Event Browser, everything works as expected, at zoom levels like 1:290000.

If the map is displayed at zoom levels like 1:2000, after the eVis Event Browser window is showed, the map does not disappears, but it is repositioned to a previous displayed map location.

I have tested this in the last QGIS master version (1c0d5e2), in QGIS 2.2.0 Valmiera and QGIS 2.0.1 Dufour. Everytime the same issue.

All the layers have the same SRID (31700) and all are loaded in QGIS as PostGIS layers.

Related issues:

Duplicates QGIS Application - Bug report # 3053: Vector layer is disappeared ...

Closed

History

- #1 - 2014-06-29 06:42 AM - Jürgen Fischer
- Category changed from C++ Plugins to C++ plugins/Evis
- #2 - 2016-12-30 01:24 AM - Alexander Bruy
- Resolution set to duplicate
- Status changed from Open to Closed

Duplicates #3053

Files

err1.png	52.5 KB	2014-03-24	Sorin Calinica
err2.png	30 KB	2014-03-24	Sorin Calinica
err3.png	26.9 KB	2014-03-24	Sorin Calinica