

QGIS Application - Bug report #17939

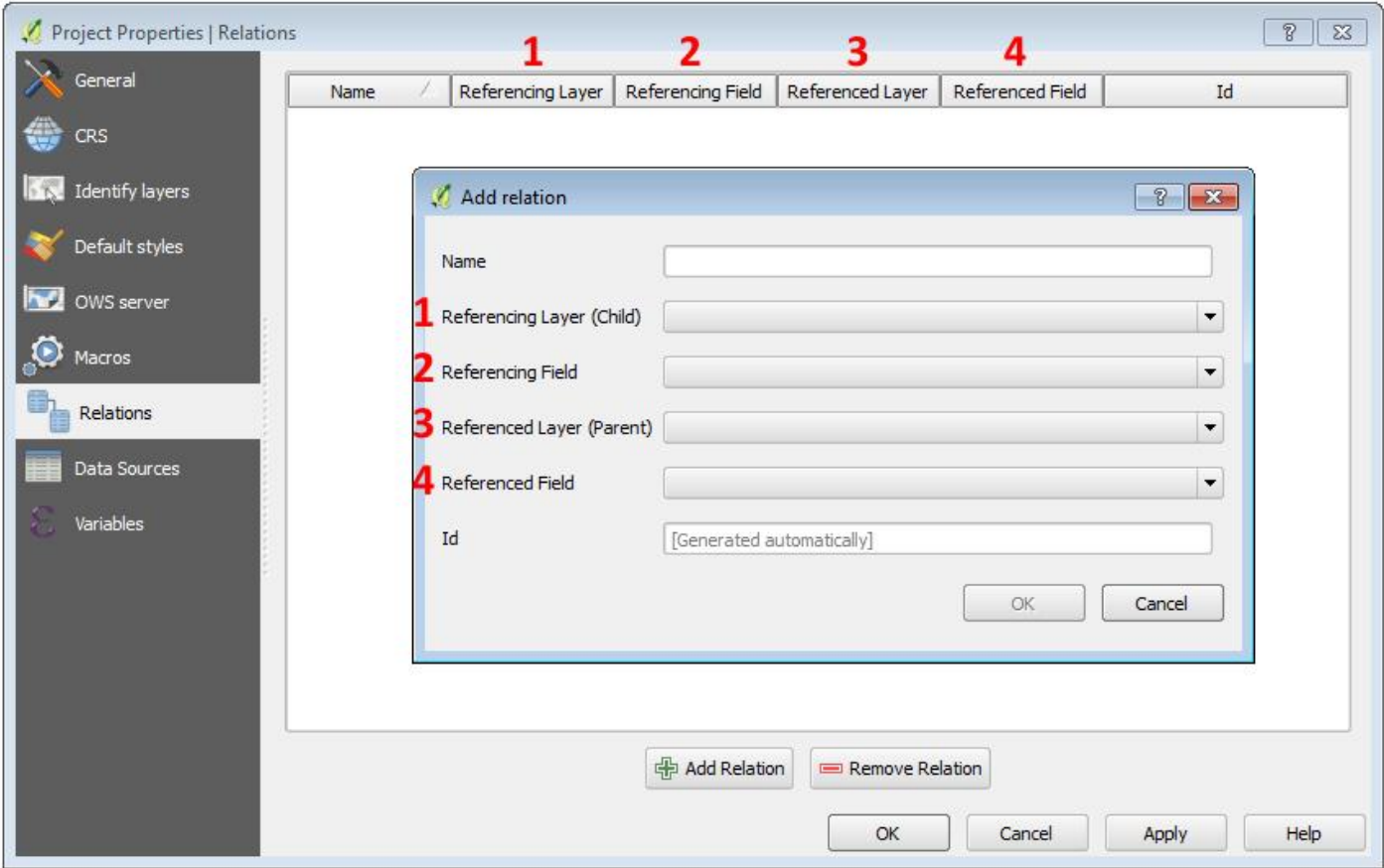
Parent/Child column pairs reversed from entry dialog to overview table

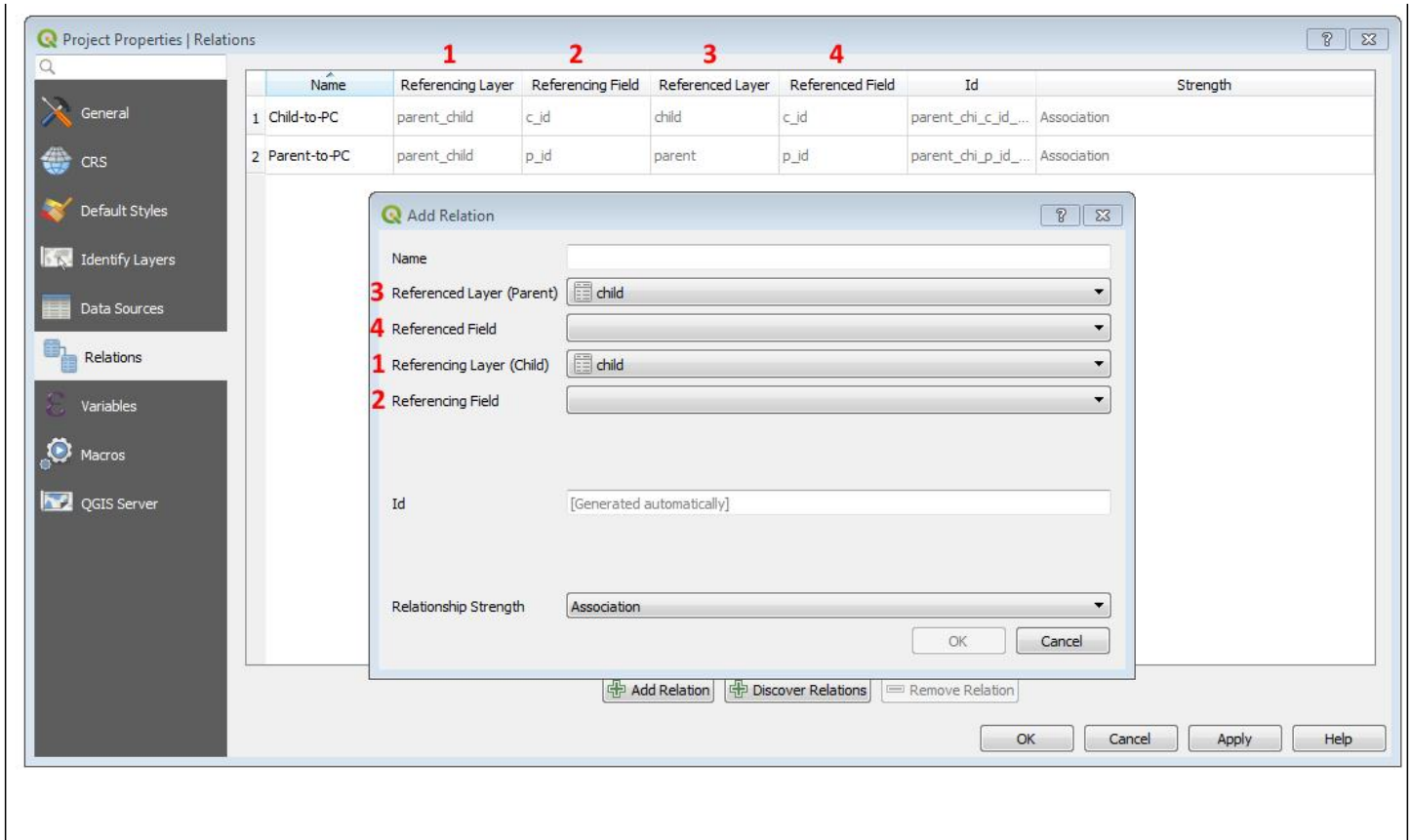
2018-01-24 01:48 AM - Nathan Saylor

Status:	Closed	
Priority:	Normal	
Assignee:		
Category:	GUI	
Affected QGIS version:	master	Regression?: Yes
Operating System:		Easy fix?: No
Pull Request or Patch supplied:		Resolution: fixed/implemented
Crashes QGIS or corrupts data:		Copied to github as #: 25835

Description

Parent/Child column pairs reversed from entry dialog to overview table. In QGIS 2.16, the sequences of the two matched. In 2.99 they're switched. I'm not into this enough to have an opinion on which should come first, but I think consistency between the dialog and overview would be desirable.





Associated revisions

Revision 237455a7 - 2018-01-24 11:52 PM - Nyal Dawson

Use same relation parent/child order in list as in new relation dialog

Fixes #17939

History

#1 - 2018-01-24 09:58 AM - Nyal Dawson

- Status changed from Open to In Progress

PR <https://github.com/qgis/QGIS/pull/6157>

#2 - 2018-01-24 11:52 PM - Nyal Dawson

- % Done changed from 0 to 100

- Status changed from In Progress to Closed

Applied in changeset commit:qgis|237455a78f99d4240e7a54d0a718b14c1ae65151.

#3 - 2018-02-21 09:46 PM - Giovanni Manghi

- Resolution set to fixed/implemented

Files

QRelations2_16.jpg

56.7 KB

2018-01-24

Nathan Saylor

