

QGIS Application - Feature request #12820

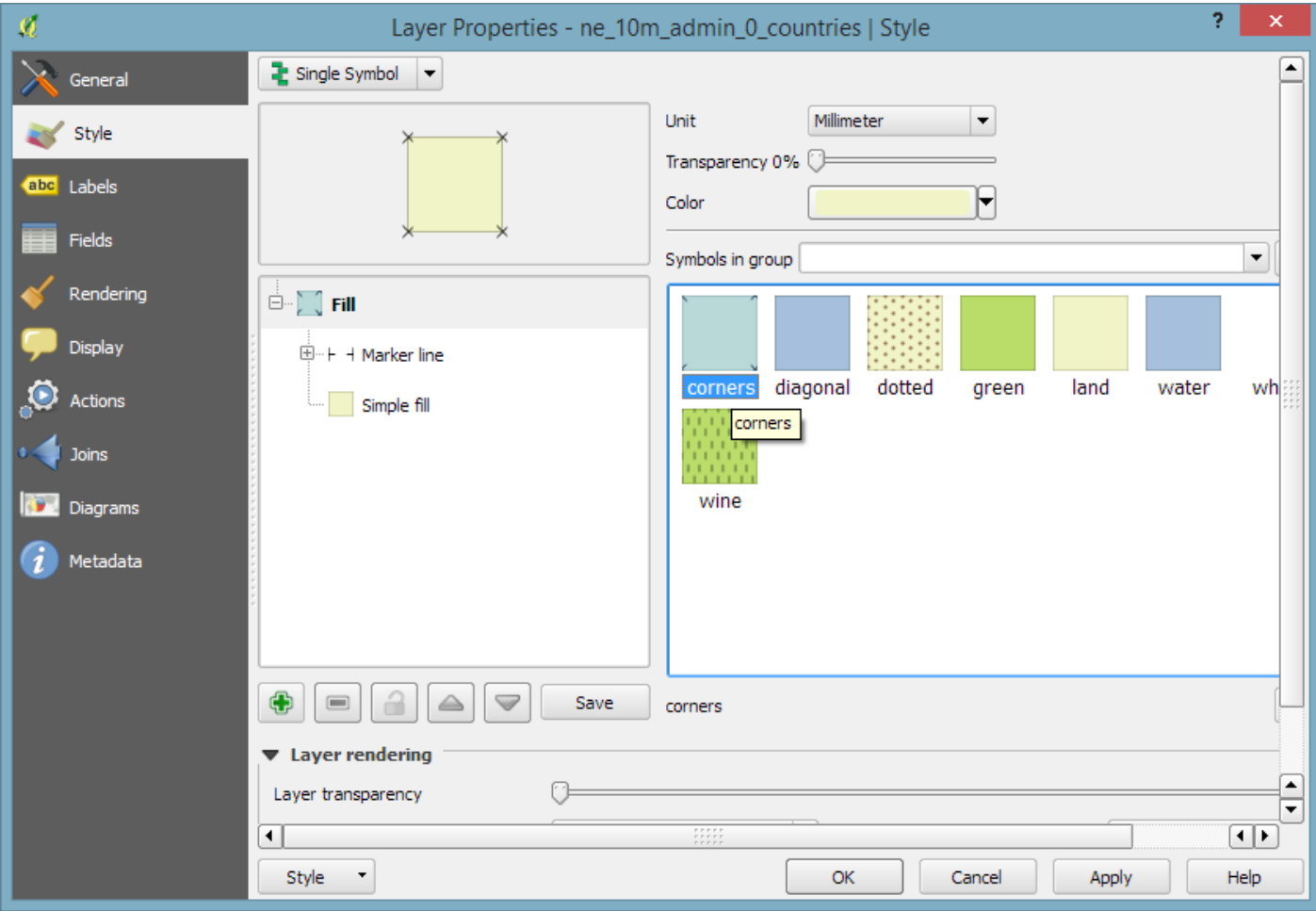
Improve polygon symbol preview

2015-05-24 11:12 AM - Anita Graser

Status:	Closed	
Priority:	Normal	
Assignee:		
Category:	GUI	
Pull Request or Patch supplied:		Resolution: fixed/implemented
Easy fix?:	No	Copied to github as #: 20916

Description

The current polygon symbol previews are cropped to the square border. This is an issue for styles such as the default "corner" style which contain elements which extend outside of the original square:



Can the preview images be changed to include some space around the original square to solve this issue?

History

#1 - 2015-05-31 12:04 PM - Anita Graser

- Tracker changed from Bug report to Feature request

#2 - 2017-05-01 12:47 AM - Giovanni Manghi

- Easy fix? set to No

#3 - 2018-10-31 06:49 AM - Nyal Dawson
- Status changed from Open to Feedback
- Description updated

This is fixed now, isn't it?

#4 - 2018-10-31 08:27 AM - Anita Graser
- Resolution set to fixed/implemented
- Status changed from Feedback to Closed

Files

poly_style_preview.png	41.2 KB	2015-05-24	Anita Graser
------------------------	---------	------------	--------------