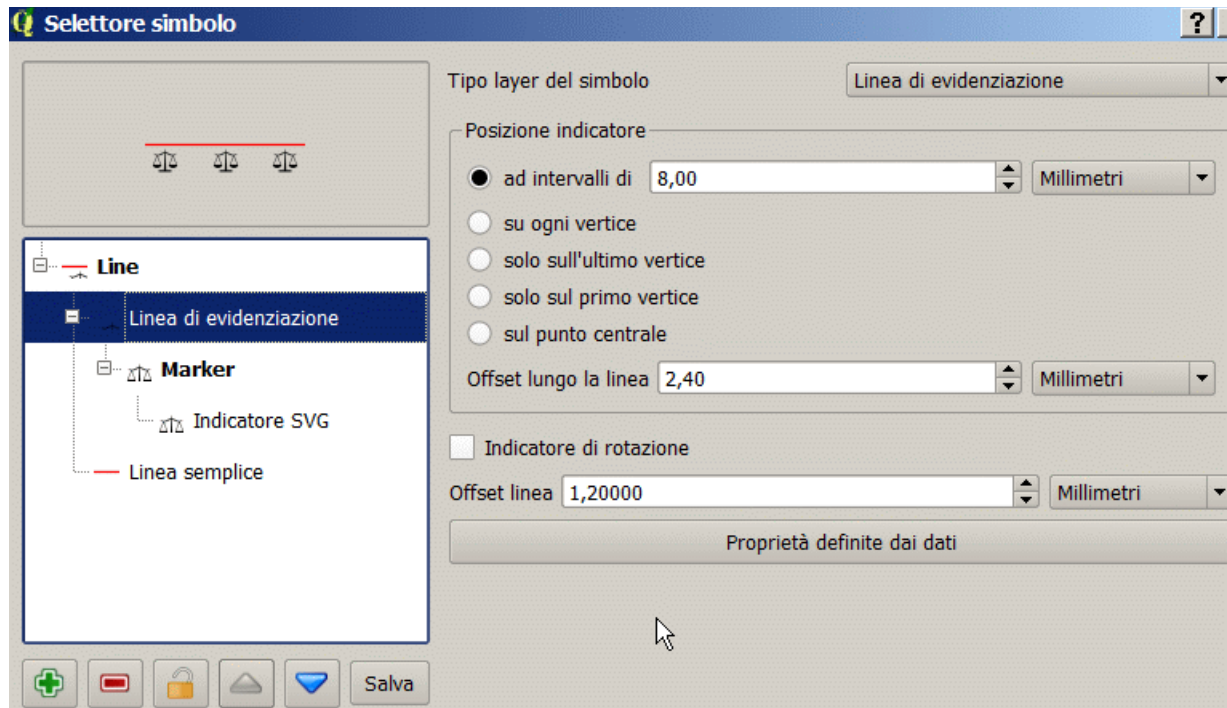


Using a linear dataset and adding a level with an evidation-line and svg symbol:

Step 1)

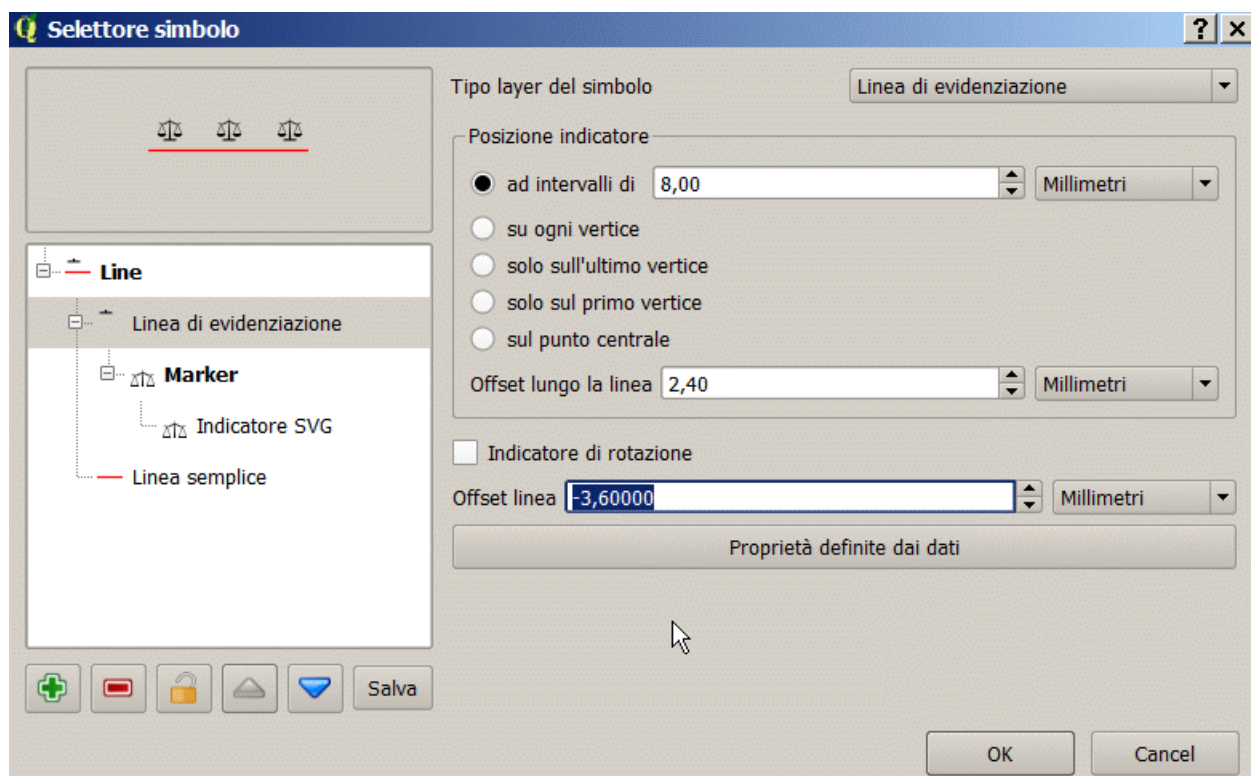
If the checkbox “rotation indicator” in NOT Checked and line-offset is



With a positive value, the svg-symbol go bottom the line, but is put seem correctly (forward).

Step 2)

If the offset-line has a negative value the symbol go over the the line, but always forward.

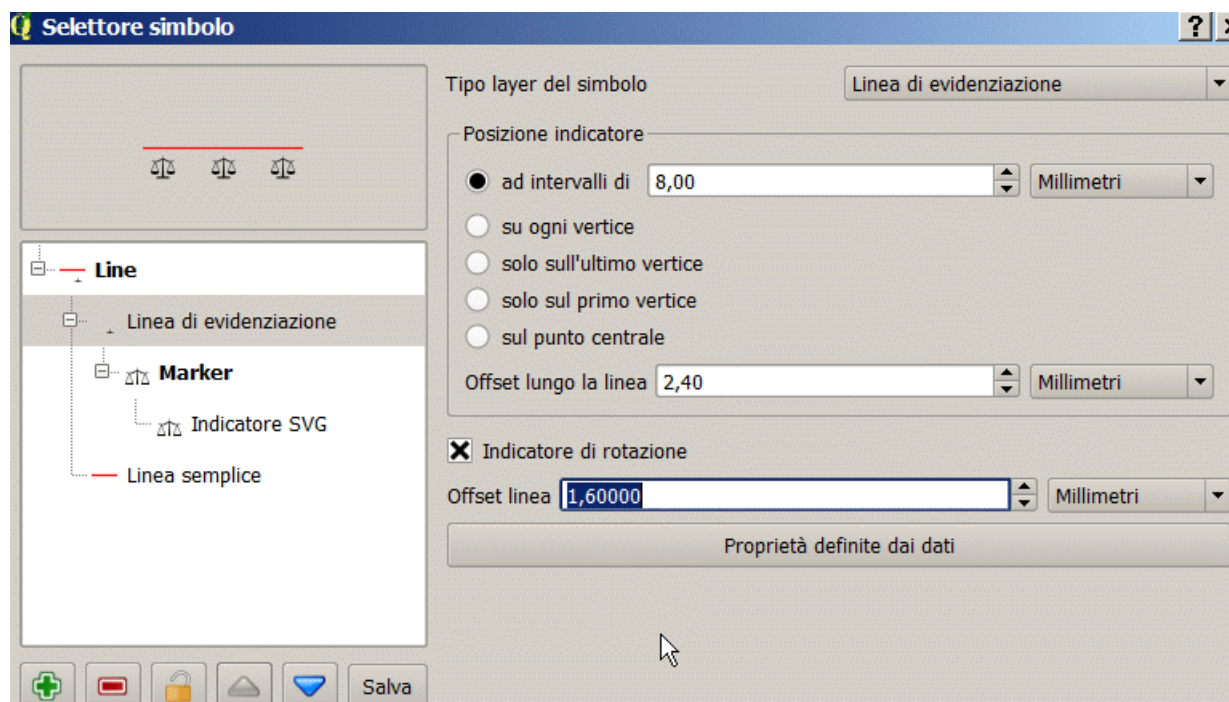


INSTEAD:

if I check the rotation-indicator this happened:

Step 3)

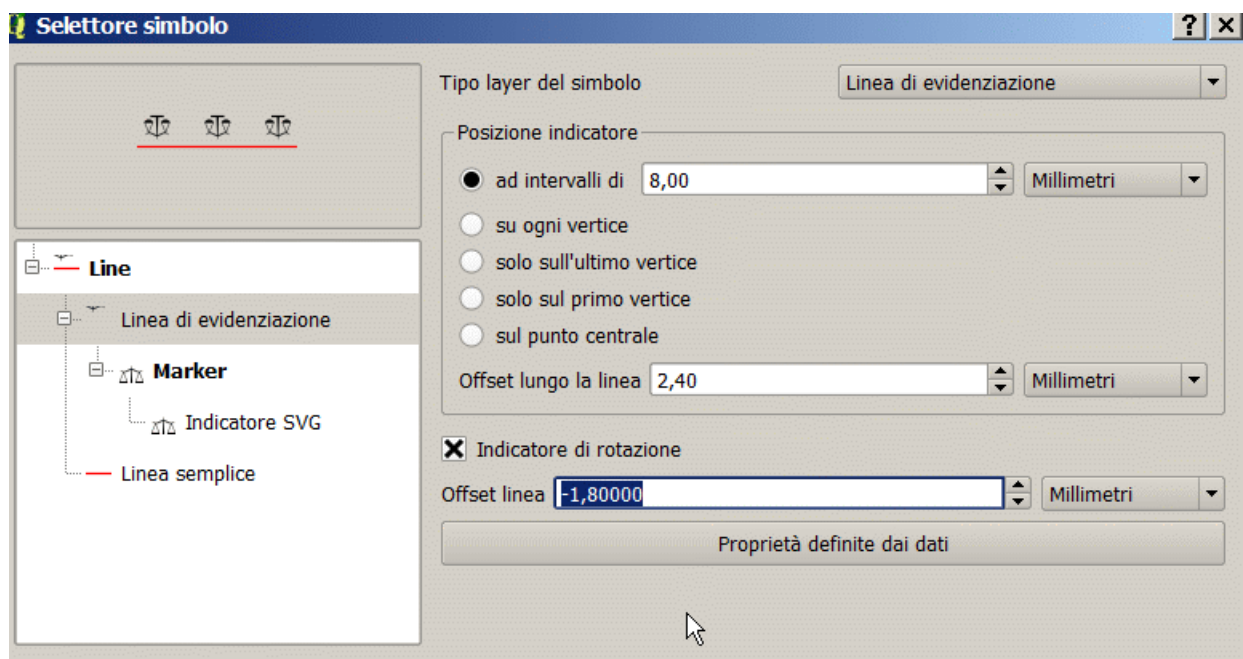
With a negative value for the offset-line the symbol go under but always forward. (it seem ok)



Step 4)

Finally, If I put a negative value for the offset-line and the rotation-indicator is checked.

The symbol go over, but IT IS REVERSED!



Is this correct ?

I guess this is a bug.

