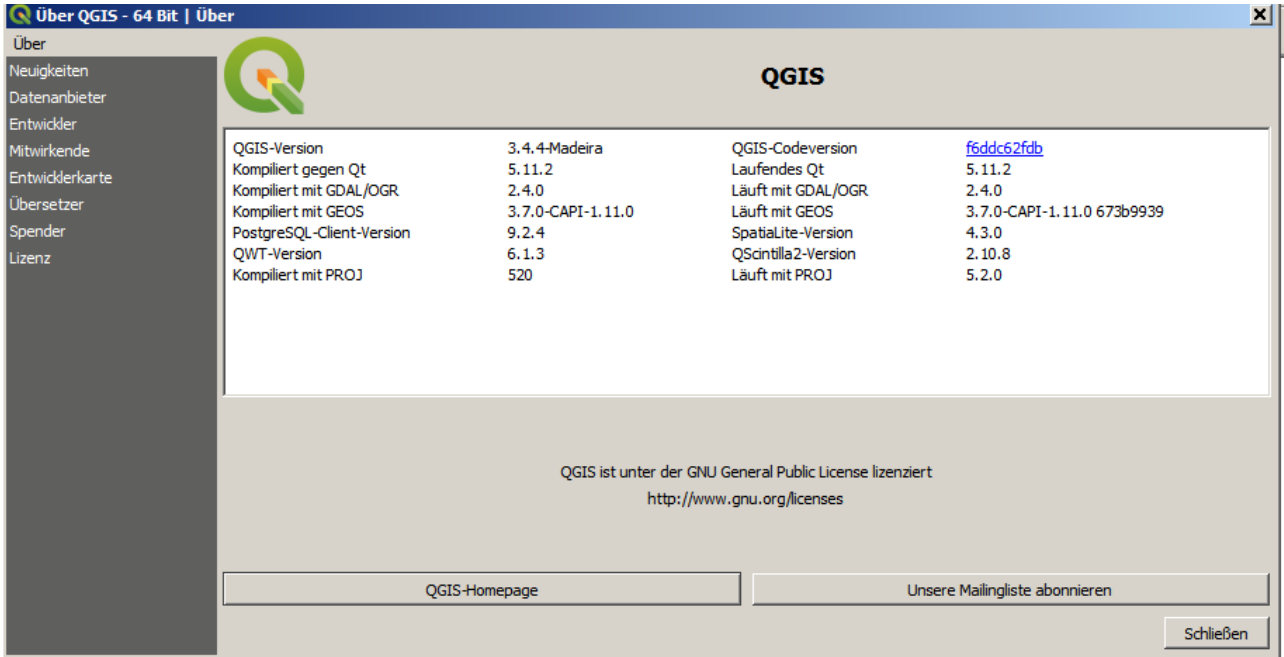
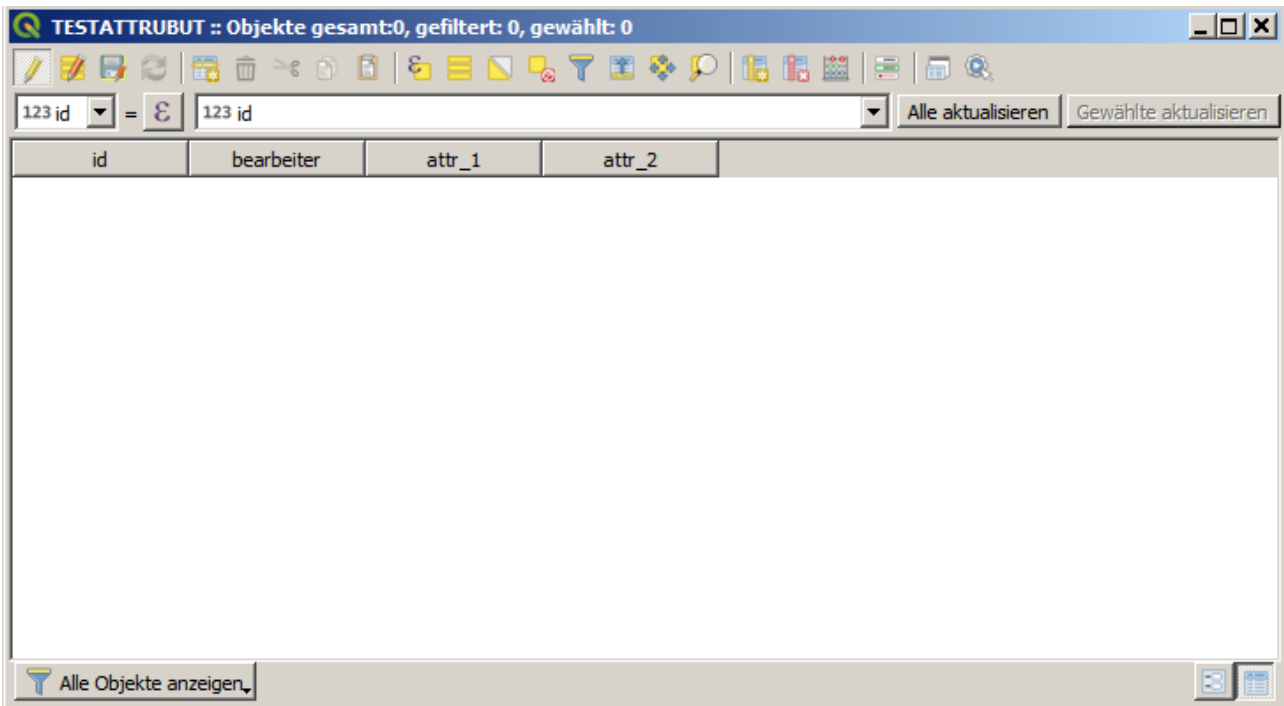


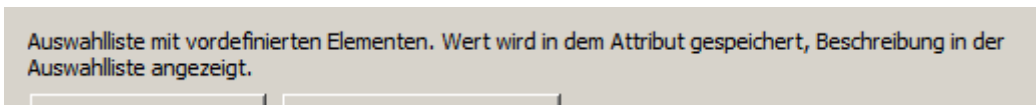
0) QGIS Version:

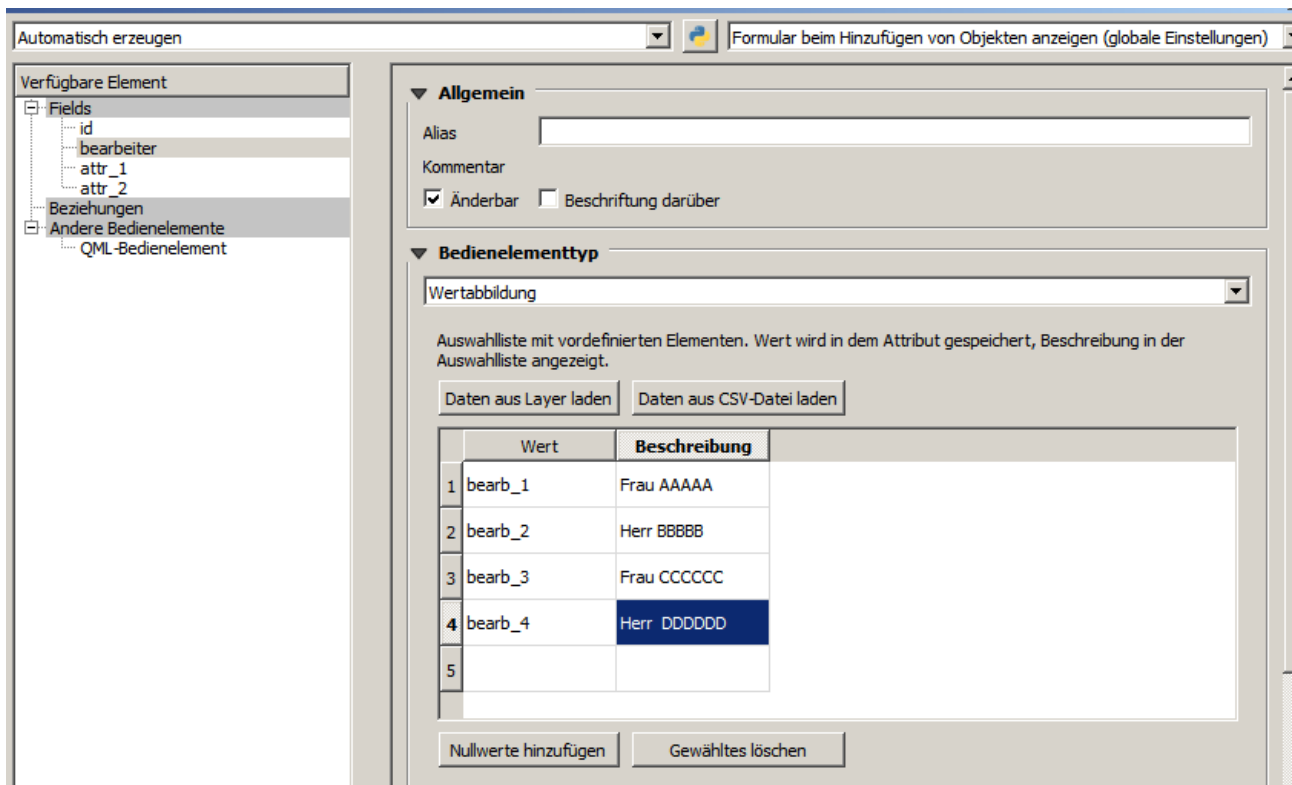


1) Create a Qgis Project with a Shapefile with some attributes (format = string, l=10):



1a) Make a form with value relation:





The goal is to have the raw values in the attribute table and the description values in the form, so bearb_1-4 in the attribute table and Herr/Frau AAAA-DDDDD in the form.

1b) Editing:

When edition the correct form pops up

TESTATTRIBUT - Objektattribute

Aktionen

id: NULL

bearbeiter: Frau AAAAA

attr_1: Frau AAAAA
Herr BBBBB

attr_2: Frau CCCCC
Herr DDDDD

OK Abbrechen

... but the entry in the attribute table is incorrect (should be bearb_1 in this case):

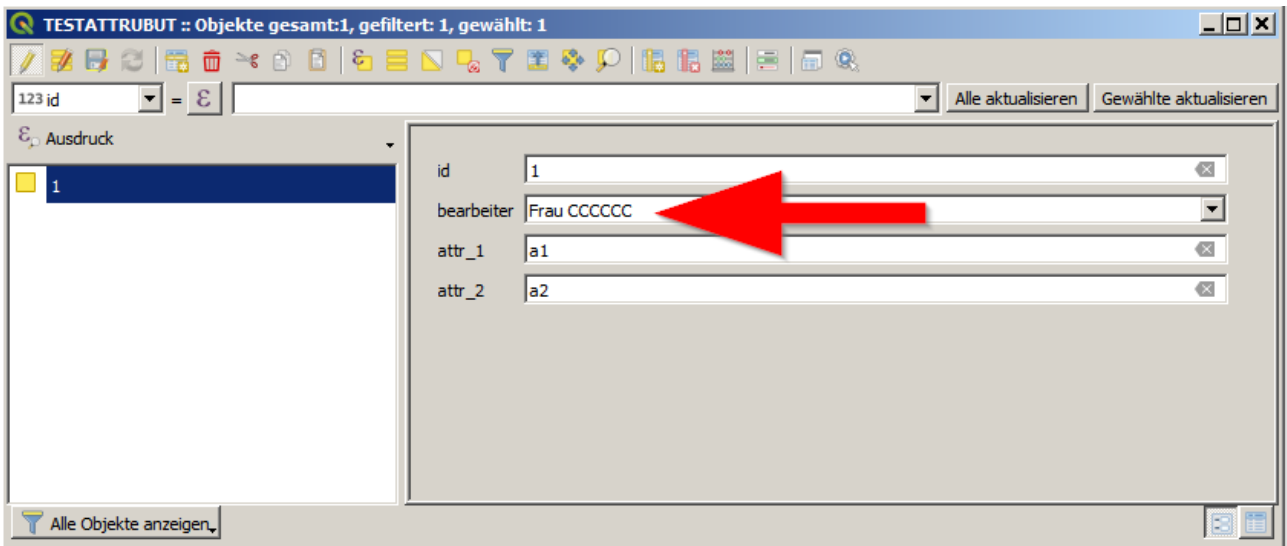
TESTATTRIBUT :: Objekte gesamt:1, gefiltert: 1, gewählt: 0

123 id = [] Alle aktualisieren Gewählte aktualisieren

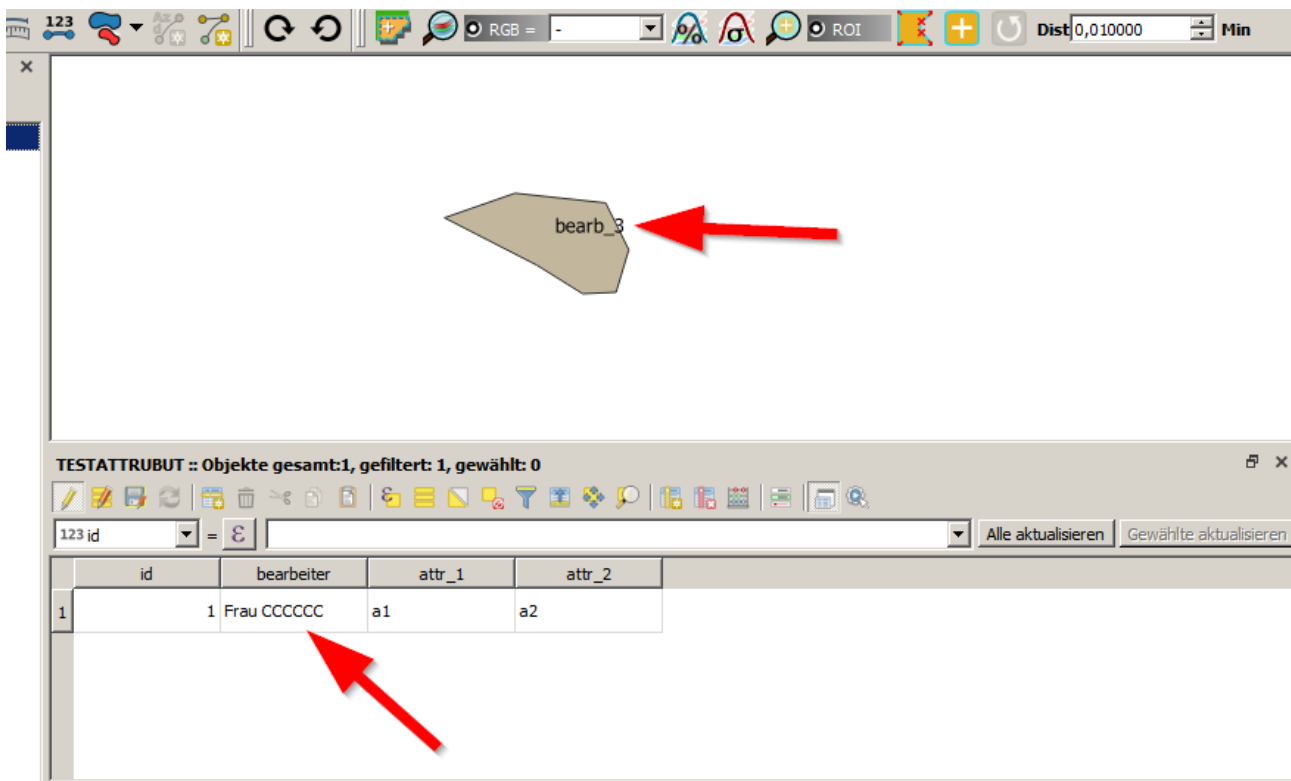
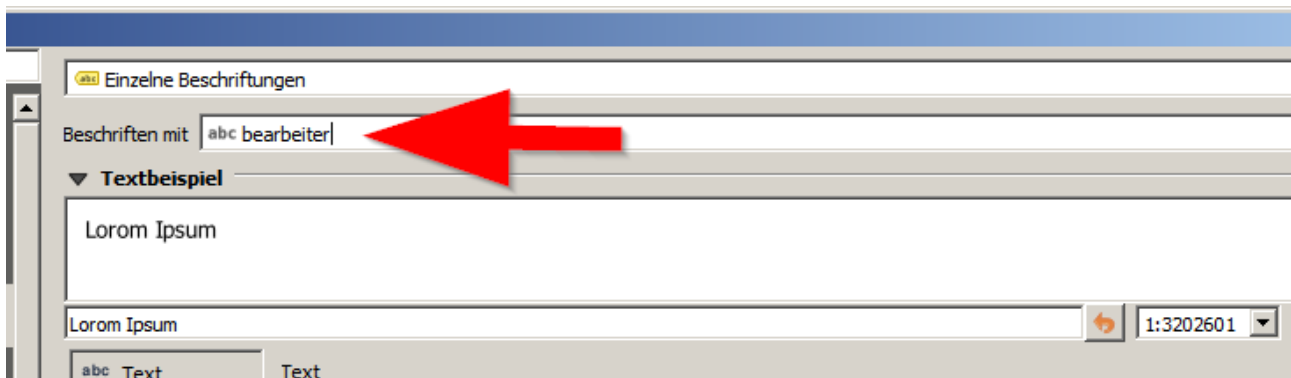
	id	bearb	attr_1	attr_2
1	1	Frau CCCCC	a1	a2

Alle Objekte anzeigen

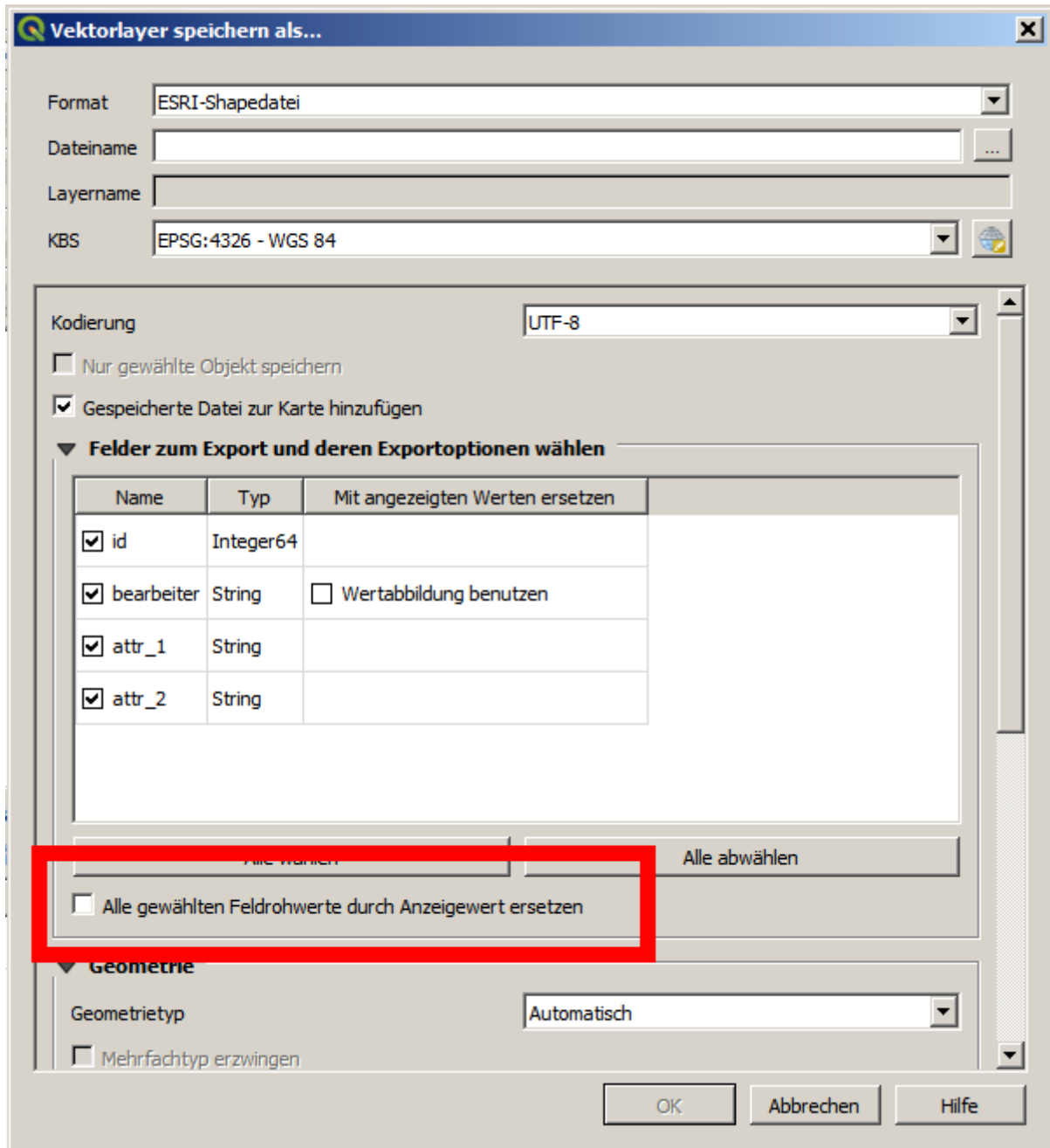
1c) Changing to form view changes nothing:



.. so one could think at the moment, that the value in the attribute table is wrong, but that's not true
→ labeling the object results in the correct value:



2) When exporting as a Shapefile one is asked about the values to be saved....



What results as expected in a correct result:

TESTATTRIBUT_OHNE :: Objekte gesamt:1, gefiltert: 1, gewählt: 0

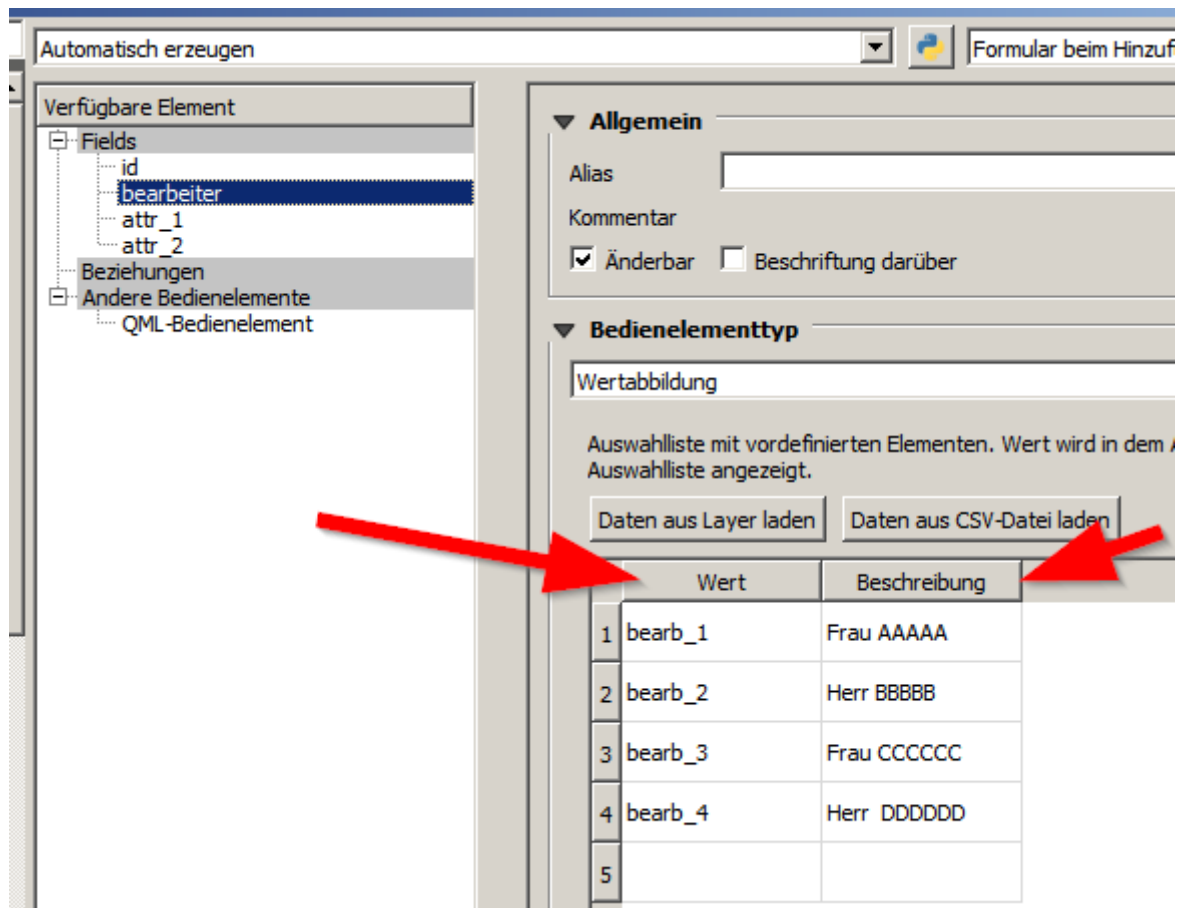
id	bearbeiter	attr_1	attr_2
1	1 bearb_3	a1	a2

and a wrong one in the other case:

TESTATTRIBUT_OHNE :: Objekte gesamt:1, gefiltert: 1, gewählt: 0

id	bearbeiter	attr_1	attr_2
1	1 bearb_3	a1	a2

Watch here, that the desired values are flipped because label is still the field „bearbeiter“ but the description is displayed!



There is something wrong going on, and one doesn't see the desired raw values in the attribute table.